

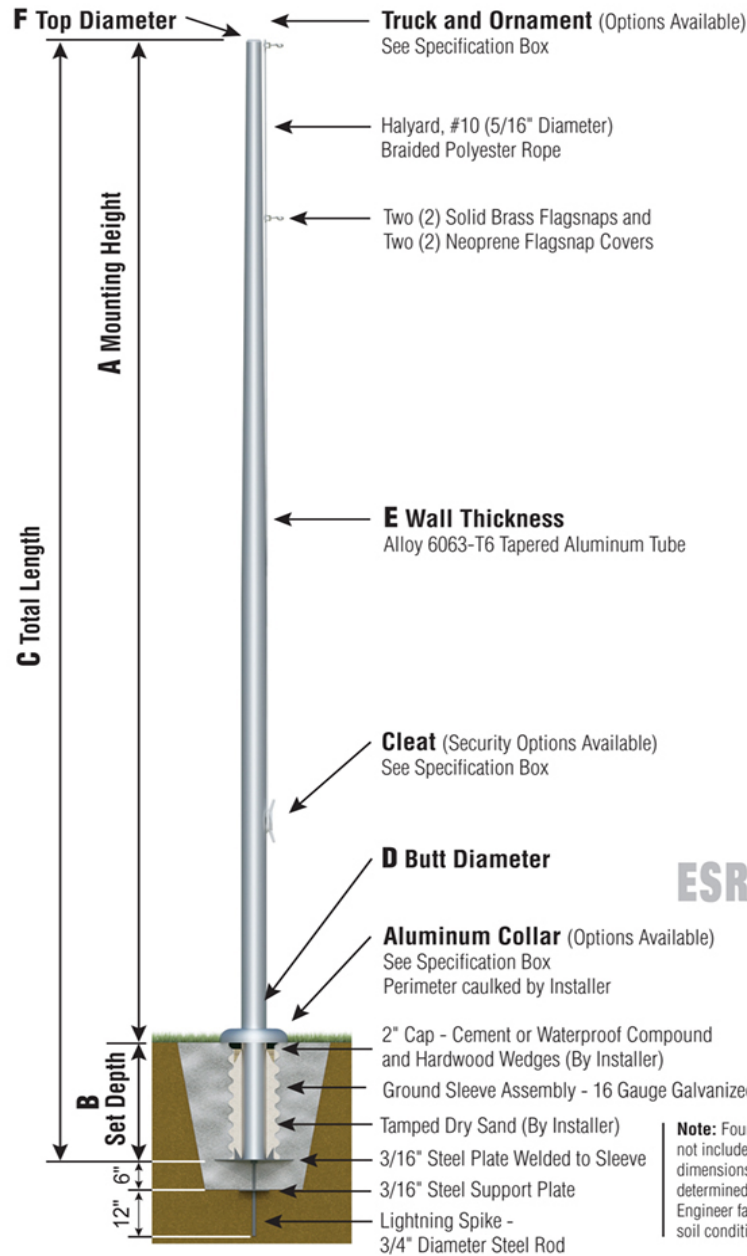


Continental Series

ESR - External Single Revolving
Rope Halyard
Ground Set Installation

ESR25D61

- SAT



NOMINAL EXPOSED HEIGHT: Total Shaft Length of 25' flagpoles is 26'-6" with a Set Depth of 2'-6". With the Truck and Ornament attached, the nominal Mounting Height is 25'.

| | |
|----------------|-----------|
| Customer Name: | |
| Dealer: | Qty: 1 |
| Project: | Location: |
| Notes: | |



TRK-9610

In-Line Truck
Single Revolving

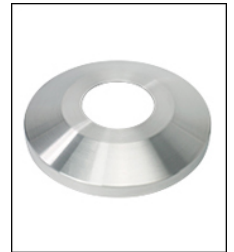


BAL-0612-GLD-ES

HD Gold Anodized
Aluminum Ball

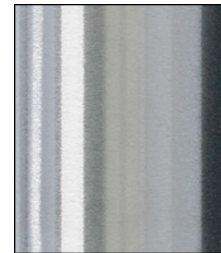


**CLA-9090-SAT |
7' from bottom
Cleat Only**



COL1-A06S

FC-11 Spun Alum
1-Piece



SAT
Satin Finish

| Specifications |
|---|
| A. Mounting Height: 24' |
| B. Set Depth: 2'-6" |
| C. Total Length: 26'-6" |
| D. Butt Diameter: 6" |
| E. Wall Thickness: .188" |
| F. Top Diameter: 3.5" |
| Flagpole Sections: 1 |
| Shaft Weight: 140 lbs. |
| Hardware Weight: 9 lbs. |
| Ground Sleeve Weight: 32 lbs. |
| * Max Flag Size: 5' x 8' |
| * Max Wind Speed w/Nylon Flag: 168 mph |
| * Max Wind Speed No Flag: 253 mph |
| * Wind Speed Specifications from ANSI/NAAMM FP 1001-07 |