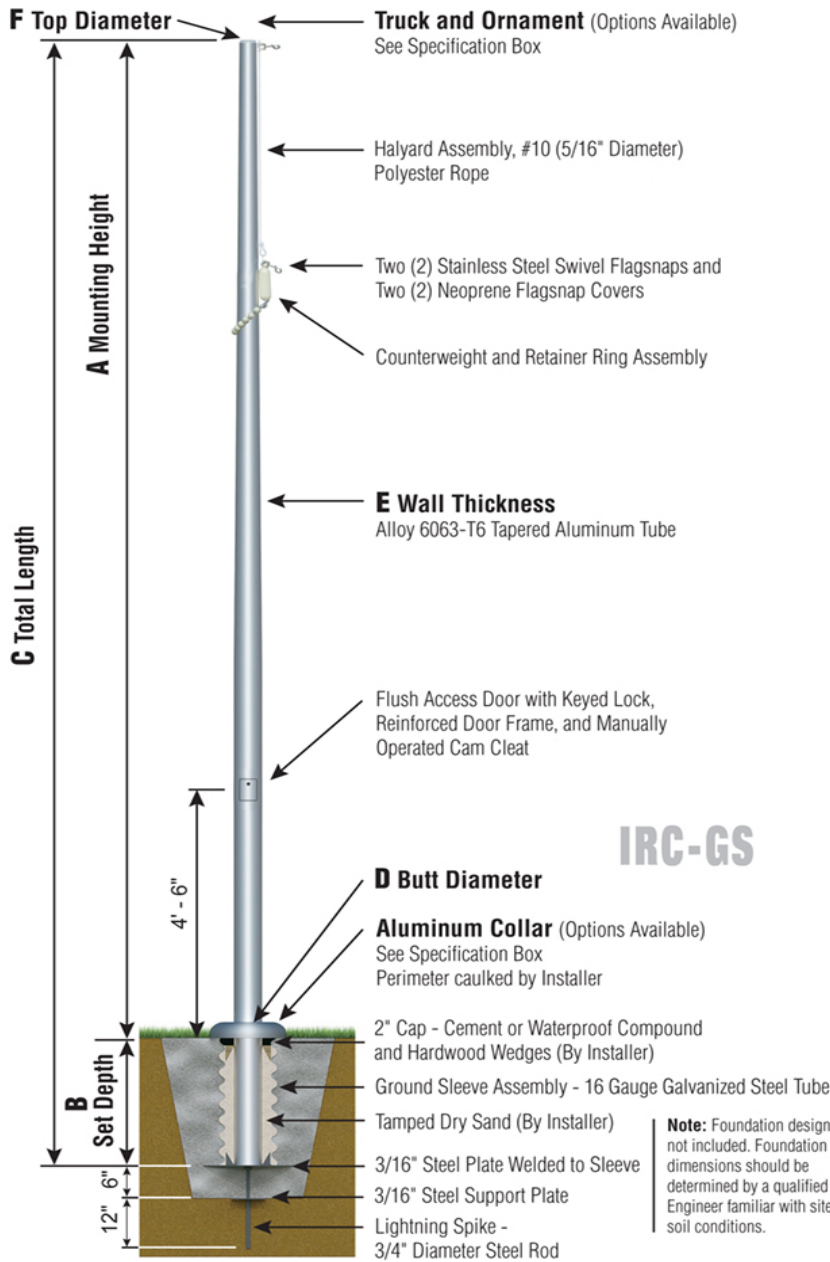




Sentry II Series

IRC - Internal Cam Cleat
Rope Halyard
Ground Set Installation



IRC35D71

- SAT



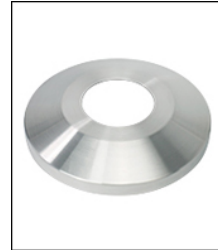
TRK-9660

Int. Revolving Truck
Sealed Bearings



BAL-0812-GLD-ES

HD Gold Anodized
Aluminum Ball



COL1-A07S

FC-11 Spun Alum
1-Piece



SAT

Satin Finish



IRC - CAM CLEAT

Reinforced Welded
Door Frame

Specifications

A. Mounting Height: 35'
B. Set Depth: 3'-6"
C. Total Length: 38'-6"
D. Butt Diameter: 7"
E. Wall Thickness: .188"
F. Top Diameter: 3.5"
Flagpole Sections: 1
Shaft Weight: 212 lbs.
Hardware Weight: 18 lbs.
Ground Sleeve Weight: 39 lbs.
* Max Flag Size: 6' x 10'
* Max Wind Speed w/Nylon Flag: 127 mph
* Max Wind Speed No Flag: 187 mph
* Wind Speed Specifications from ANSI/NAAMM FP 1001-07

Customer Name:	
Dealer:	Qty: 1
Project:	Location:
Notes:	

IRC35D71G-T0Y-O2P-C1G-FSA