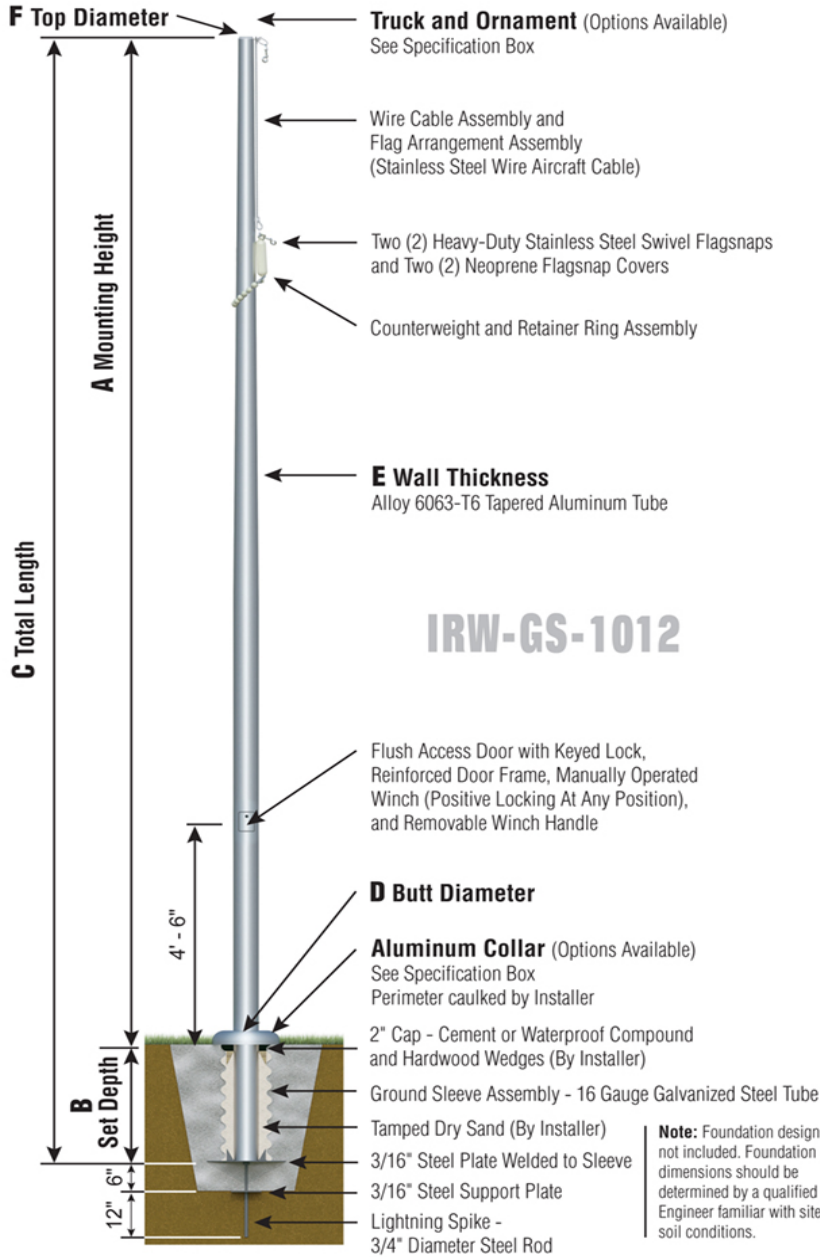




## Independence Series

IRW - Internal with Winch  
Wire Halyard  
Ground Set Installation



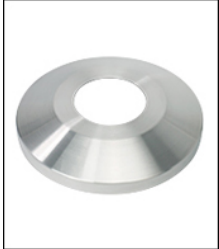
# IRW60F13 - SAT



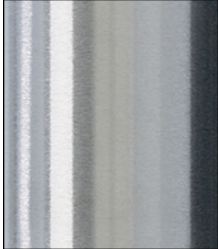
**TRK-9800-58**  
Int. Revolving Truck  
Sealed Bearings



**BAL-1058-GLD**  
HD Gold Anodized  
Aluminum Ball



**COL1-A10S**  
FC-11 Spun Alum  
1-Piece



**SAT**  
Satin Finish



**IRW - WINCH**  
Reinforced Welded  
Door Frame

Specifications	
A. Mounting Height:	60'
B. Set Depth:	6'-0"
C. Total Length:	66'-0"
D. Butt Diameter:	10"
E. Wall Thickness:	.250"
F. Top Diameter:	4"
Flagpole Sections:	3
Shaft Weight:	644 lbs.
Hardware Weight:	52 lbs.
Ground Sleeve Weight:	90 lbs.
* Max Flag Size:	12' x 18'
* Max Wind Speed w/Nylon Flag:	104 mph
* Max Wind Speed No Flag:	143 mph
* Wind Speed Specifications from ANSI/NAAMM FP 1001-07	

Customer Name:	
Dealer:	Qty: 1
Project:	Location:
Notes:	

IRW60F13G-TAZ-00F-C2C-FSA