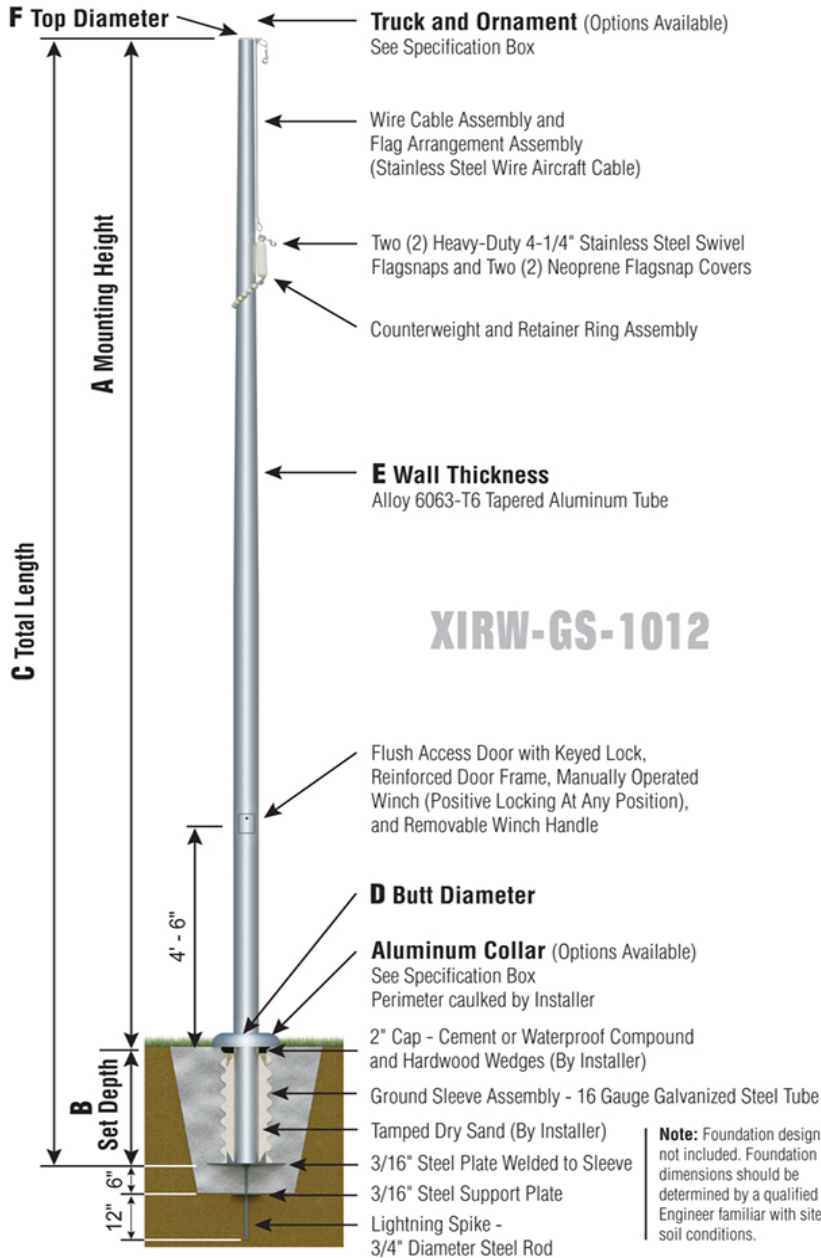




Xtreme Series

XIRW - Xtreme Reinforced Int. w/ Winch
Wire Halyard
Ground Set Installation



XIRW40F12 - SAT



TRK-9800SS-58
Int. Rev. Sealed
Truck
SS Spindle



BAL-1058-GLD
HD Gold Anodized
Aluminum Ball



COL1-A10C
FC-11 Cast Alum
1-Piece



SAT
Satin Finish



XIRW - WINCH
Flush Mount
Hinged Door

Specifications
A. Mounting Height: 40'
B. Set Depth: 4'-0"
C. Total Length: 44'-0"
D. Butt Diameter: 10"
E. Wall Thickness: .250"
F. Top Diameter: 4"
Flagpole Sections: 2
Shaft Weight: 355 lbs.
Hardware Weight: 47 lbs.
Ground Sleeve Weight: 44 lbs.
* Max Flag Size: 8' x 12'
* Max Wind Speed w/Nylon Flag: 192 mph
* Max Wind Speed No Flag: 259 mph
* Wind Speed Specifications from ANSI/NAAMM FP 1001-07

Customer Name:	
Dealer:	Qty: 1
Project:	Location:
Notes:	

XIRW40F12G-TAE-O0F-C2D-FSA