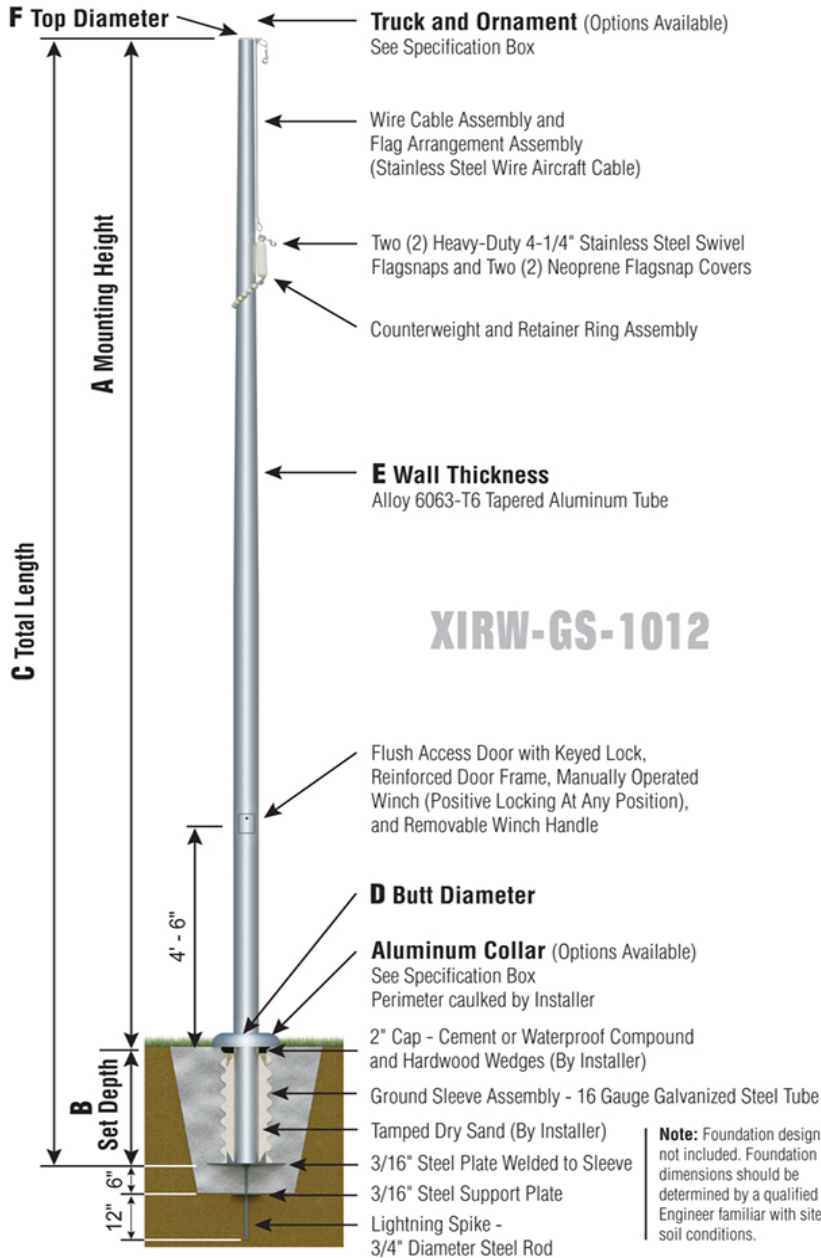




Xtreme Series

XIRW - Xtreme Reinforced Int. w/ Winch
Wire Halyard
Ground Set Installation



XIRW50F23 - SAT



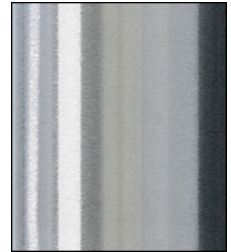
TRK-9800SS-58
Int. Rev. Sealed
Truck
SS Spindle



BAL-1258-GLD
HD Gold Anodized
Aluminum Ball



COL1-A12C
FC-11 Cast Alum
1-Piece



SAT
Satin Finish



XIRW - WINCH
Flush Mount
Hinged Door

Specifications
A. Mounting Height: 50'
B. Set Depth: 5'-0"
C. Total Length: 55'-0"
D. Butt Diameter: 12"
E. Wall Thickness: .250"
F. Top Diameter: 4"
Flagpole Sections: 3
Shaft Weight: 560 lbs.
Hardware Weight: 65 lbs.
Ground Sleeve Weight: 65 lbs.
* Max Flag Size: 10' x 15'
* Max Wind Speed w/Nylon Flag: 179 mph
* Max Wind Speed No Flag: 242 mph
* Wind Speed Specifications from ANSI/NAAMM FP 1001-07

Customer Name:	
Dealer:	Qty: 1
Project:	Location:
Notes:	

XIRW50F23G-TAE-O0G-C2P-FSA